



Fleet planning made easy

Offering a trusted platform that drives fleets into a smart, electric, cost-effective future.

30+
CUSTOMERS

100,000+
VEHICLES

400 million
MILES

Simplify fleet electrification planning

Fleet electrification requires new complex analysis for fleet managers: are there EV models that meet their vehicle class and range requirements? What chargers are needed? Which vehicles should be electrified first? What are the operational cost and carbon emissions over the vehicle lifetime? With so many questions like these, Gexa Energy would like to introduce eIQ Mobility, a member of the NextEra Energy family of companies. eIQ Mobility makes it easy for fleets to get these answers fast and select the best locations for electrification with data they have readily available.

Scale assessments within and across fleets

Whether you are a large fleet managing hundreds or thousands of vehicles, or a service provider working with many kinds of fleet customers, eIQ Mobility streamlines electrification assessments, reducing assessment planning from months to days. eIQ Mobility's flexible platform makes it easy to integrate new EV data as new models become available or as fleet routes change.

"It required six employees months to come up with a fleet electrification strategy that eIQ delivered in a matter of days."

— Fleet Manager, Global Parcel Delivery

Our customers:



Utilities



**Top
Manufacturers**



**Food &
Beverage**



**Governments &
Municipalities**



**Schools &
Transit**



**Global Parcel
Delivery**

About eIQ Mobility

eIQ Mobility, a member of the NextEra Energy family of companies, is the leading software provider of fleet electrification advisory solutions in North America. Founded in 2018 in response to the unique roadblocks that corporate and public fleet leaders face in electrifying their fleet, eIQ Mobility uses proprietary decision software to provide data-driven insights into fleet EV feasibility. Based in San Francisco, California, the team consists of data scientists, developers, and experts in energy optimization, utilities, EV, and finance.

Contract terms apply.
Gexa Energy, LP #10027

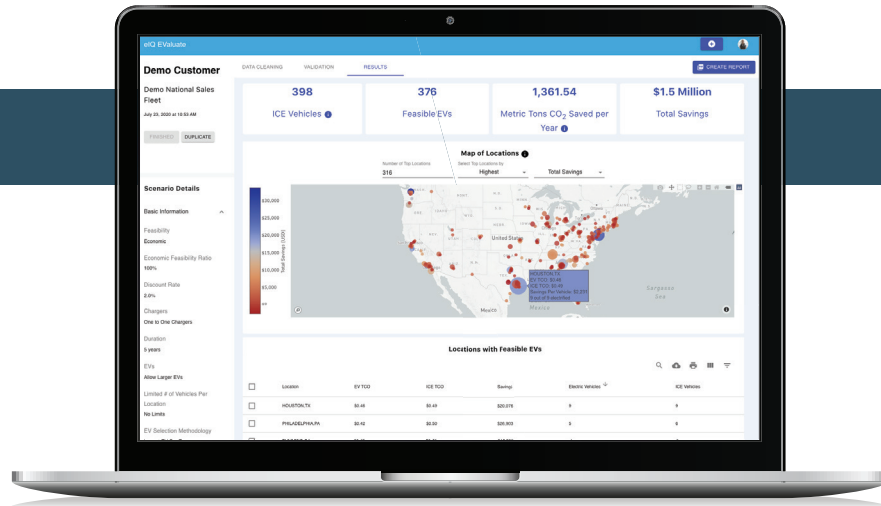
GexaEnergy.com

Ready to get started?

Call 855-639-8158 or email
CommercialSales@GexaEnergy.com

eIQ EValuate™

Comprehensive
electrification
assessments for all
fleet types.



Understand

Current Fleet Operations

Understand critical vehicle operations of each fleet that impact electrification strategy, including:

- » Vehicle miles traveled
- » Dwell time
- » Vehicles by location, age, type
- » Fuel purchase history

Select

Electric Vehicles

Identify the EVs that meet each fleet vehicle's operational requirements.

Results include:

- » Least-cost EV that meets vehicle class and climate-adjusted range requirements
- » Dynamic EV selection based on make, model, and class preferences

Charging Infrastructure

Identify the number and type of EV chargers required for each location.

Results include:

- » Estimated load shape by vehicle and depot for both near term and long term infrastructure upgrade and resiliency planning
- » Optimized charger selection by depot based on vehicle energy requirements, dwell time, and EV power limits

Model

Economics & Sustainability

Estimate emissions and total costs of ownership between selected EVs and current ICE vehicles.

Compare:

- » Total costs of ownership (capex, maintenance, opex)
- » ICE operational carbon dioxide emissions to grid emissions from EV charging

Locations

Identify the least-cost feasible EVs and required chargers for each location.

Prioritize locations for:

- » Number of electrifiable vehicles
- » Optimal TCO savings
- » Greatest carbon emissions reduction